

**NEW**



**WHE/WHASeries Heavy Duty Connector**  
**6-48 Side entry/Top entry**  
**Push-in Type/Screw Type**  
 -Water-proof,anti-rust and anti-corrosion  
 -Silver-plated contacts



No.	PART NO.	Order No.	Entry Side	Number of contact	Description	Water-proof connector	Panel Installation Dimension (mm)	Picture
-----	----------	-----------	------------	-------------------	-------------	-----------------------	-----------------------------------	---------

**WHA Heavy-duty connector**

Voltage/Current: 4、 5、 6 contacts (230V/10A), 8 contacts (230V/16A)

Surface: Silver-plated

Contact resistance: ≤1m Ω

Cross section: 1.0-2.5mm<sup>2</sup> (AWG 18-14) For 4/5 contacts

0.14-4.0mm<sup>2</sup> (AWG 26-12) For 6/8 contacts



**1 set including above accessories;**  
**6/8 pins type will provide separated ferrule pins.**

1	WHA04C	100506001	Side entry	4	3+1ground	PG11		
2	WHA05C	100506002	Side entry	5	4+1ground	M20		
3	WHA06C	100506003	Side entry	6	5+1ground	M20		
4	WHA08C	100506004	Side entry	8	7+1ground	M20		
5	WHA04D	100506005	Top entry	4	3+1ground	PG11		
6	WHA05D	100506006	Top entry	5	4+1ground	M20		
7	WHA06D	100506007	Top entry	6	5+1ground	M20		
8	WHA08D	100506008	Top entry	8	7+1ground	M20		
9	WHA04W	100506009	Horizontal	4	3+1ground	PG11		
10	WHA05W	100506010	Horizontal	5	4+1ground	M20		
11	WHA06W	100506011	Horizontal	6	5+1ground	M20		
12	WHA08W	100506012	Horizontal	8	7+1ground	M20		
13	WHA04WD	100506013	Horizontal Butt	4	3+1ground	PG11		
14	WHA05WD	100506014	Horizontal Butt	5	4+1ground	PG11		
15	WHA06WD	100506015	Horizontal Butt	6	5+1ground	PG11		
16	WHA08WD	100506016	Horizontal Butt	8	7+1ground	PG11		
17	WHA04DJ	100506017	Docking	4	3+1ground	PG11	<p>No Panel Installation</p>	
18	WHA05DJ	100506018	Docking	5	4+1ground	M20		
19	WHA06DJ	100506019	Docking	6	5+1ground	M20		
20	WHA08DJ	100506020	Docking	8	7+1ground	M20		

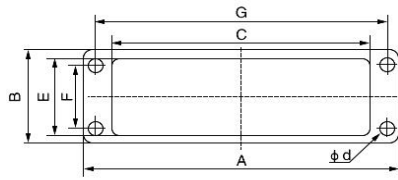
**WHA Heavy Duty Male/Female Inserts**

13	WHA04X	100506021	Male+Female	4	3+1ground	Suitable for WHA04D, WHA04C, WHA04W, WHA04WD, WHA04DJ	
14	WHA05X	100506022	Male+Female	5	4+1ground	Suitable for WHA05D, WHA05C, WHA05W, WHA05WD, WHA05DJ	
15	WHA06X	100506023	Male+Female	6	5+1ground	Suitable for WHA06D, WHA06C, WHA06W, WHA06WD, WHA06DJ	
16	WHA08X	100506024	Male+Female	8	7+1ground	Suitable for WHA08D, WHA08C, WHA08W, WHA08WD, WHA08DJ	

No.	PART NO.	Order No.	Entry Side	Number of contact	Water-proof connector	A (mm)	B (mm)	C (mm)	E (mm)	F (mm)	G (mm)	d (mm)	Picture
-----	----------	-----------	------------	-------------------	-----------------------	--------	--------	--------	--------	--------	--------	--------	---------

### WHE\*\*/P Push-in Heavy-duty connector

Voltage/Current: 500V/16A  
 Surface: Silver-plated  
 Contact resistance:  $\leq 1m\Omega$   
 Cross section: 1.0-2.5mm<sup>2</sup> (AWG 18-14)  
 Tightening torque: 0.5Nm  
 Stripping length: 7mm



Panel Installation size:

**PUSH IN TOO FREE WIRING**

25	WHE06C/P	100507001	Side entry	6	PG13.5	80.0	43.0	52.2	35.0	32.0	70.0	4.3	
26	WHE06D/P	100507002	Top entry	6	PG13.5	80.0	43.0	52.2	35.0	32.0	70.0	4.3	
27	WHE10C/P	100507003	Side entry	10	PG16	93.0	43.0	65.2	35.0	32.0	83.0	4.3	
28	WHE10D/P	100507004	Top entry	10	PG16	93.0	43.0	65.2	35.0	32.0	83.0	4.3	
29	WHE16C/P	100507005	Side entry	16	PG21	113.0	43.0	85.5	35.0	32.0	103.0	4.3	
30	WHE16D/P	100507006	Top entry	16	PG21	113.0	43.0	85.5	35.0	32.0	103.0	4.3	
31	WHE24C/P	100507007	Side entry	24	PG21	140.0	43.0	112.2	35.0	32.0	130.0	4.3	
32	WHE24D/P	100507008	Top entry	24	PG21	140.0	43.0	112.2	35.0	32.0	130.0	4.3	
33	WHE32C/P	100507009	Side entry	32	PG29	113.0	80.5	86.0	73.0	60.0	103.0	4.5	
34	WHE32D/P	100507010	Top entry	32	PG29	113.0	80.5	86.0	73.0	60.0	103.0	4.5	
35	WHE48C/P	100507011	Side entry	48	PG29	140.0	80.5	113.0	73.0	60.0	130.0	4.5	
36	WHE48D/P	100507012	Top entry	48	PG29	140.0	80.5	113.0	73.0	60.0	130.0	4.5	

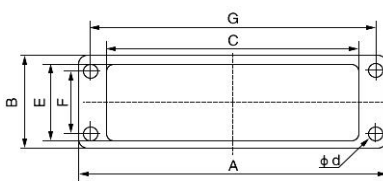
### WHE\*\*/P Heavy Duty Male/Female Inserts

37	WHE06X/P	100507013	Male+Female	6	Insertion for WHE06C/P,WHE06D/P							
38	WHE10X/P	100507014	Male+Female	10	Insertion for WHE10C/P,WHE10D/P							
39	WHE16X/P	100507015	Male+Female	16	Insertion for WHE16C/P,WHE16D/P							
40	WHE24X/P	100507016	Male+Female	24	Insertion for WHE24C/P,WHE24D/P							
41	WHE32X/P	100507017	Male+Female	32	Insertion for WHE32C/P,WHE32D/P							
42	WHE48X/P	100507018	Male+Female	48	Insertion for WHE48C/P,WHE48D/P							

No.	PART NO.	Order No.	Entry Side	Number of contact	Water-proof connector	A (mm)	B (mm)	C (mm)	E (mm)	F (mm)	G (mm)	d (mm)	Picture
-----	----------	-----------	------------	-------------------	-----------------------	--------	--------	--------	--------	--------	--------	--------	---------

### WHE Heavy-duty connector






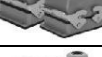



Voltage/Current: 500V/16A  
 Surface: Silver-plated  
 Contact resistance:  $\leq 1m\Omega$   
 Cross section: 1.0-2.5mm<sup>2</sup> (AWG 18-14)  
 Tightening torque: 0.5Nm  
 Stripping length: 7mm








Panel Installation size:

**With male/female insert**

1	WHE06C	100505001	Side entry	6	PG13.5	80.0	43.0	52.2	35.0	32.0	70.0	4.3	
2	WHE06D	100505002	Top entry	6	PG13.5	80.0	43.0	52.2	35.0	32.0	70.0	4.3	
3	WHE10C	100505003	Side entry	10	PG16	93.0	43.0	65.2	35.0	32.0	83.0	4.3	

4	WHE10D	100505004	Top entry	10	PG16	93.0	43.0	65.2	35.0	32.0	83.0	4.3	
5	WHE16C	100505005	Side entry	16	PG21	113.0	43.0	85.5	35.0	32.0	103.0	4.3	
6	WHE16D	100505006	Top entry	16	PG21	113.0	43.0	85.5	35.0	32.0	103.0	4.3	
7	WHE24C	100505007	Side entry	24	PG21	140.0	43.0	112.2	35.0	32.0	130.0	4.3	
8	WHE24D	100505008	Top entry	24	PG21	140.0	43.0	112.2	35.0	32.0	130.0	4.3	
9	WHE32C	100505009	Side entry	32	PG29	113.0	80.5	86.0	73.0	60.0	103.0	4.5	
10	WHE32D	100505010	Top entry	32	PG29	113.0	80.5	86.0	73.0	60.0	103.0	4.5	
11	WHE48C	100505011	Side entry	48	PG29	140.0	80.5	113.0	73.0	60.0	130.0	4.5	
12	WHE48D	100505012	Top entry	48	PG29	140.0	80.5	113.0	73.0	60.0	130.0	4.5	

### WHE Heavy Duty Male/Female Inserts

13	WHE06X	100505013	Male+Female	6	Insertion for WHE06C/WHE06D							
14	WHE10X	100505014	Male+Female	10	Insertion for WHE10C/WHE10D							
15	WHE16X	100505015	Male+Female	16	Insertion for WHE16C/WHE16D							
16	WHE24X	100505016	Male+Female	24	Insertion for WHE24C/WHE24D							
17	WHE32X	100505017	Male+Female	32	Insertion for WHE32C/WHE32D							
18	WHE48X	100505018	Male+Female	48	Insertion for WHE48C/WHE48D							