

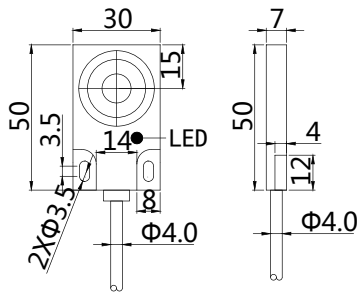


Features:

- Q30 Plastic housing;
- 6/10mm , flush/non-flush mountable;
- DC 3-wire , switching output;
- Cable



Dimensioned drawing

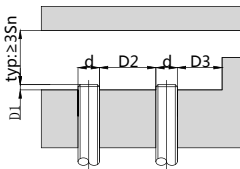


Model No.

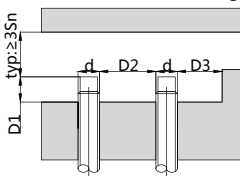
Sensing range	Sn:2-6 mm	Sn:2-10 mm
NPN N. O	CB-Q3006N-P11P2	CN-Q3010N-P11P2
NPN N. C	CB-Q3006N-P21P2	CN-Q3010N-P21P2
PNP N. O	CB-Q3006P-P11P2	CN-Q3010P-P11P2
PNP N. C	CB-Q3006P-P21P2	CN-Q3010P-P21P2

Mounting

(flush mounting)



(non-flush mounting)

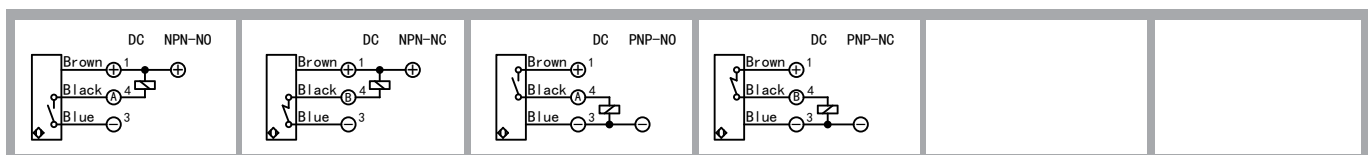


Correction Factor	
Nav-ferrous metal	Factor
Water	1
Alcohol	0.7
Ceramic	0.6
Glass	0.5
Oil	0.3

Technical data

Electrical data	Operating voltage	10-30V DC
	Switching frequency	100Hz
	Voltage drop	≤2.0V
	Leakge current	<0.01mA
	Load current	200mA
	No load current	≤10mA(24V)
	Hysteresis	<15%(Sr)
	Repeatability	<5.0%(Sr)
	Temperature drift	<10%(Sr)
	Short circuit protection	Yes
	Overload protection	Yes
Polarity reversal protection	Yes	
Environment	Ambient temperature	-25...70°C
	Ingress protection	IP67
Mechanical data	Housing material	PBT
	Face material	PBT
Electrical connection	Connectors	PVC cable/2m ; 3*0.25mm²
Accessories	Accessories	NO
		(to be ordered separately)

Wiring



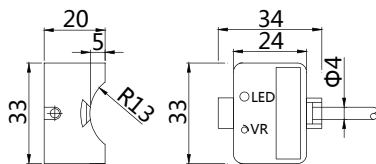


Features :

- Q33 Plastic housing;
- 3mm , flush mountable;
- DC 3-wire , switching output;
- Cable

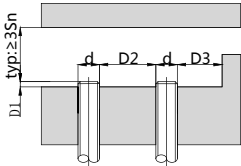


Dimensioned drawing



Mounting

(flush mounting)



Correction Factor	
Nav-ferrous metal	Factor
Water	1
Alcohol	0.7
Ceramic	0.6
Glass	0.5
Oil	0.3

Model No.

Sensing range	Sn:3 mm
NPN N. O	CB-Q3303N-P11P2
NPN N. C	CB-Q3303N-P21P2
PNP N. O	CB-Q3303P-P11P2
PNP N. C	CB-Q3303P-P21P2

Technical data

Electrical data	Operating voltage	10-30V DC
	Switching frequency	100Hz
	Voltage drop	≤2.0V
	Leakge current	<0.01mA
	Load current	200mA
	No load current	≤10mA(24V)
	Hysteresis	<15%(Sr)
	Repeatability	<5.0%(Sr)
	Temperature drift	<10%(Sr)
	Short circuit protection	Yes
	Overload protection	Yes
Polarity reversal protection	Yes	
Environment	Ambient temperature	-25...70°C
	Ingress protection	IP67
Mechanical data	Housing material	ABS
	Face material	ABS
Electrical connection	Connectors	PVC cable/2m ; 3*0.25mm ²
Accessories	Accessories	NO
		(to be ordered separately)

Wiring

