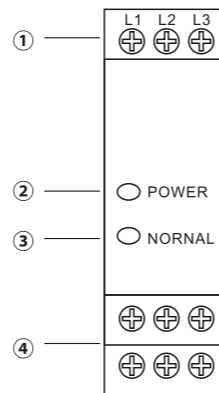




- ①电源输入端
- ②LED电源指示
- ③LED信号正确指示
- ④继电器控制信号输出

- ①Power input
- ②LED power type
- ③LED signal correctly type
- ④Relay control signal output

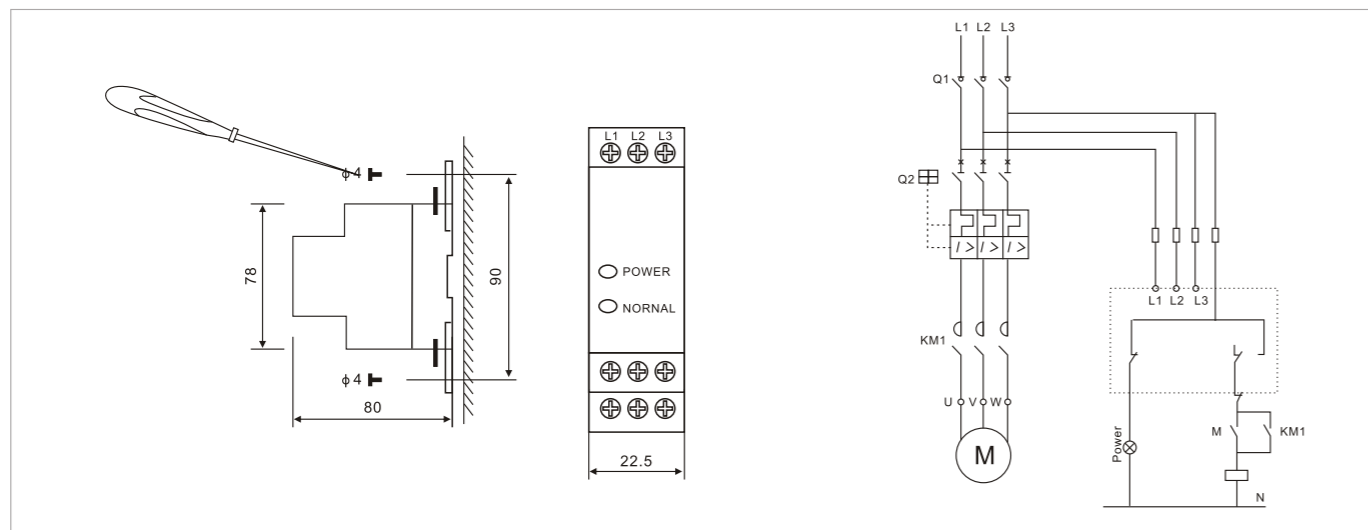


主要技术参数 Main technical parameters

- ◆ 额定绝缘电压Ui: 500.V AC.
- ◆ 使用类别下的各个额定工作电压Ue/额定工作电流Ie:AC-15:2A/250VDC-13:2A/24V
- ◆ 外壳等级防护IP:IP20
- ◆ 额定限制短路电流试验时所配的熔断器型号: NT00-4.
- ◆ 控制电源电压: 200V-500V AC
- ◆ Rated Insulation Voltage. Ui:500V AC
- ◆ Rated operating volt Ue/ Rated operating current Ie:AC-15:2A/250VDC-13:2A/24V
- ◆ Shell protection degree :IP20
- ◆ Rated short circuit current test fuse model: NT00-4.
- ◆ Control power voltage: 200-500V AC

安装及尺寸 Installation and size dimension

接线图 Wiring diagram



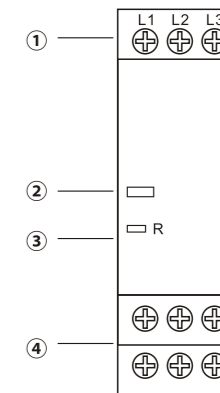
质量承诺 Quality commitment

- ◆ 本产品质保期为12个月
- ◆ 如产品在质保期内发生故障, 本公司负责免费维修
- ◆ 如果因用户使用不当影响产品性能或造成危害, 不在本公司的产品质量保证范围内, 本公司将不负责该产品
- ◆ Quality Assurance period: 12 months.
- ◆ Free of Charge for warranty product
- ◆ We are free of claims if any misuse by users to cause product misperformance or damage .



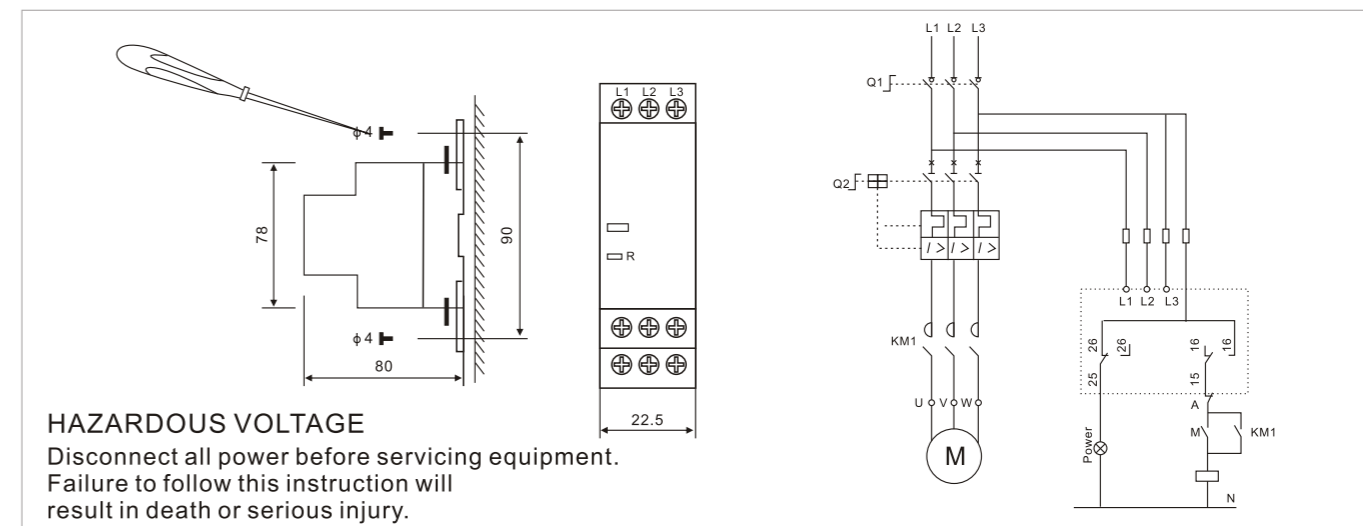
- ①电源输入端
- ②LED电源指示
- ③LED信号正确指示
- ④继电器控制信号输出

- ①Power input
- ②LED power type
- ③LED signal correctly type
- ④Relay control signal output

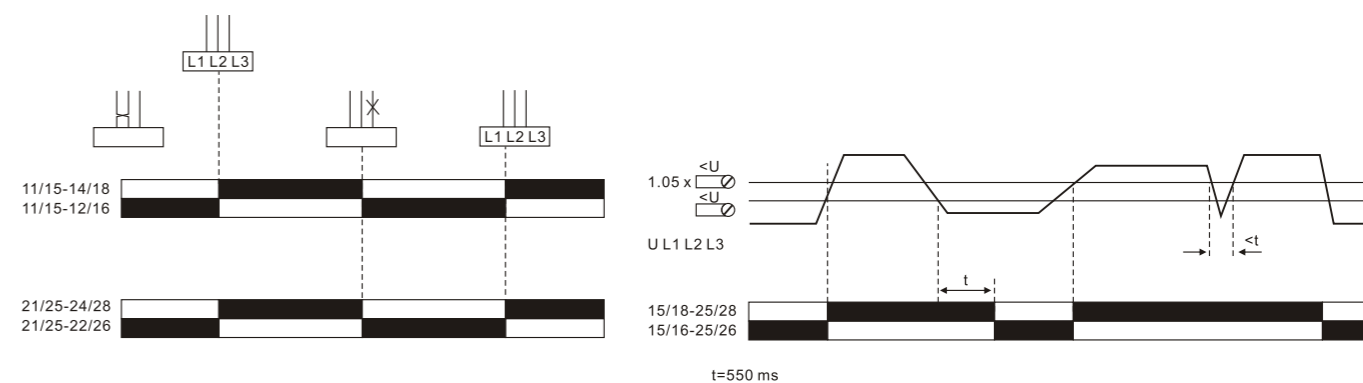


安装及尺寸 Installation and size dimension

接线图 Wiring diagram



KZ4TG20



A motor that continues to turn despite loss of a phase can regenerate a voltage if this voltage exceeds the sensing threshold, the relay will not detect phase loss. In this case, we recommend use of KZ4TG20.