

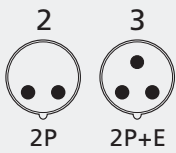
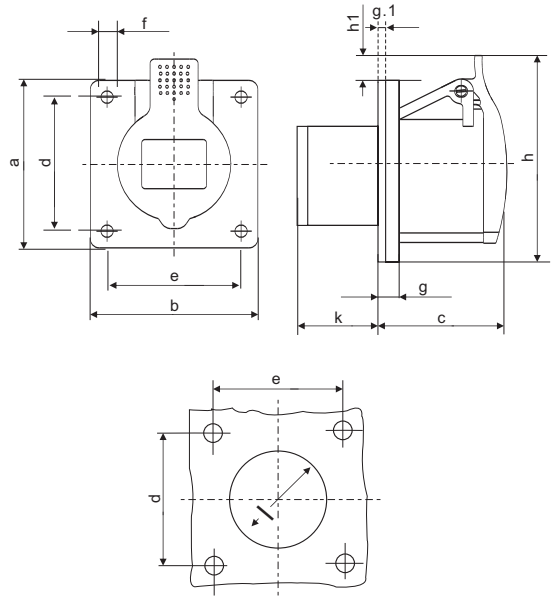


赛普 CEE/IEC 国际标准 低压暗装插座

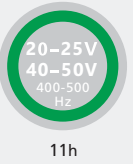
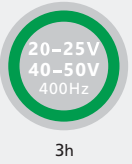
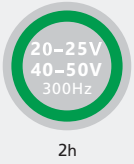
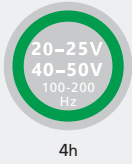
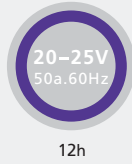
CEE/IEC INTERNATIONAL STANDARD LOW VOLTAGE PANEL MOUNTED SOCKET

符合欧洲/国际标准 EN/IEC 60309-2

Conform to European / international standards EN/IEC 60309-2



电流 极数
Current Poles



IP44 CEE/IEC 低压暗装插座 Low Voltage Panel Mounted Socket

型号 MODEL	16	2	SP603	SP604	
		3	SP610	SP611	SP612
	32	2	SP616	SP617	
		3	SP623	SP624	SP625

参数 Parameter

尺寸:毫米 Size:mm

安培 Amp	16		安培 Amp	16		安培 Amp	32		安培 Amp	32	
极数 Poles	2	3	极数 Poles	2	3	极数 Poles	2	3	极数 Poles	2	3
a	55	55	h	67	67	a	55	55	h	67	67
b	55	55	k	22	22	b	55	55	k	22	22
c	44	44	l	34	34	c	44	44	l	34	34
d	45	45	导线横截面积(平方毫米) 从最小至最大 Conductor crosssectional area (mm ²)Min. To Max	d	45	45	导线横截面积(平方毫米) 从最小至最大 Conductor crosssectional area (mm ²)Min. To Max	d	45	45	
e	45	45		e	45	45					
f	4.2	4.2	1.5-2.5	f	4.2	4.2	4-6	f	4.2	4.2	
g	8	8		g	8	8		g	8	8	
g.1	2	2		g.1	2	2		g.1	2	2	