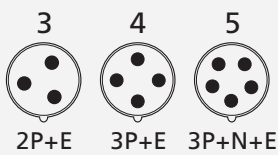
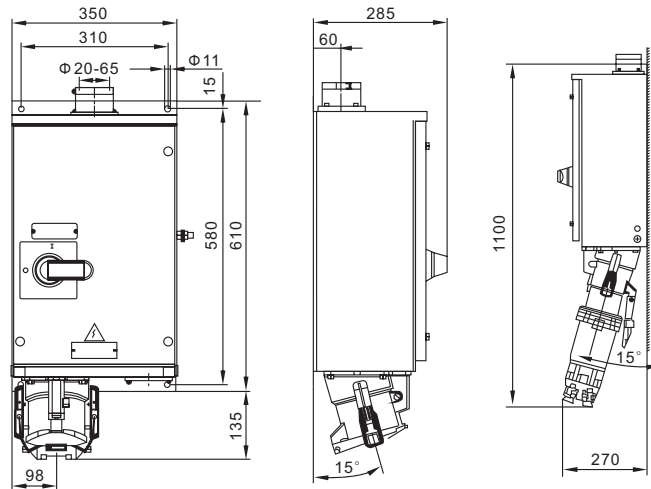




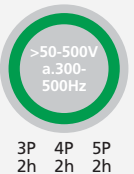
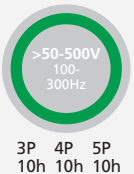
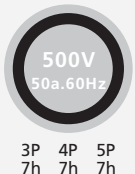
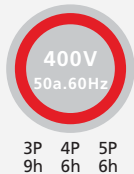
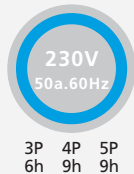
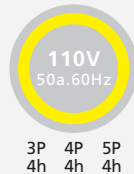
赛普 CEE/IEC 国际标准 大电流插座箱

CEE/IEC INTERNATIONAL STANDARD LARGE AMP SOCKET BOX

符合欧洲/国际标准 EN/IEC 60309-2
Conform to European / international standards EN/IEC 60309-2



电流 极数
Current Poles



IP67 CEE/IEC 大电流插座箱 Large AMP Socket Box

型号 MODEL	200	4	SP75231
		5	SP75236

参数 Parameter

尺寸:毫米 Size:mm

安培 Amp	200		安培 Amp	200	
极数 Poles	4	5	极数 Poles	4	5
a	610	610	m	1100	1100
b	350	350			
c	285	285			导线横截面积(平方毫米) 从最小至最大 Conductor crosssectional area (mm ²)Min. To Max
d	580	580			
e	310	310			120-150
f	11	11			
g	60	60			
h	745	745			