

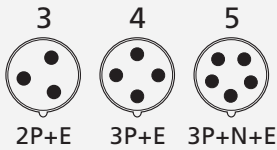
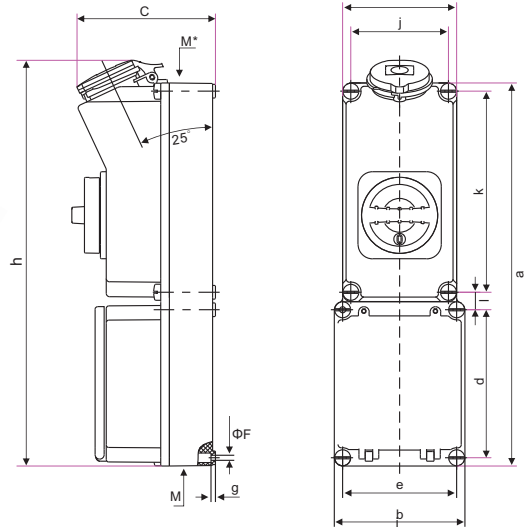


赛普 CEE/IEC 国际标准 机械联锁 带DIN标准安装条轨

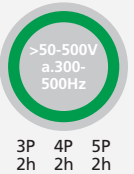
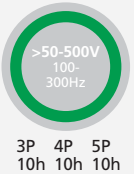
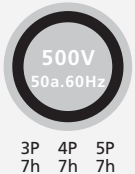
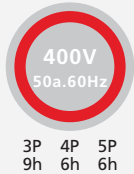
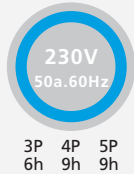
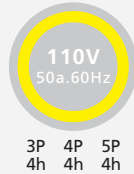
INTERNATIONAL STANDARD MECHANICAL INTERLOCK AND DIN STANDARD INSTALL GUIDE RAIL

符合欧洲/国际标准 EN/IEC 60309-2

Conform to European / international standards EN/IEC 60309-2



电流 极数
Current Poles



IP44 CEE/IEC 机械联锁 带DIN标准安装条轨 Mechanical Interlock And Din Standard Install Guide Rail

型号 MODEL	16	3	SP7213	
		4		SP5610
		5		SP5613
	32	3	SP5614	
		4		SP5615
		5		SP5618

参数 Parameter

尺寸:毫米 Size:mm

安培 Amp	16			安培 Amp	16			安培 Amp	32			安培 Amp	32		
极数 Poles	3	4	5	极数 Poles	3	4	5	极数 Poles	3	4	5	极数 Poles	3	4	5
a	396.2	396.2	396.2	M	2×25	2×25	2×25	a	396.2	396.2	396.2	M	2×25	2×25	2×25
b	135	135	135	M*	25/32	25/32	25/32	b	135	135	135	M*	25/32	25/32	25/32
c	147	149	151	导线横截面积(平方毫米) 从最小至最大 Conductor crosssectional area (mm²)Min. To Max			c	152	152	153	导线横截面积(平方毫米) 从最小至最大 Conductor crosssectional area (mm²)Min. To Max				
d	153.1	153.1	153.1	1.5-2.5			d	153.1	153.1	153.1	4-6				
e	118	118	118				e	118	118	118					
f	6.3	6.3	6.3				f	6.3	6.3	6.3					
g	7	7	7				g	7	7	7					
h	423	425	427				h	434	434	440					
i	118	118	118				i	118	118	118					
j	101	101	101				j	101	101	101					
k	208	208	208				k	208	208	208					
l	18.1	18.1	18.1				l	18.1	18.1	18.1					