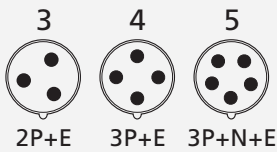
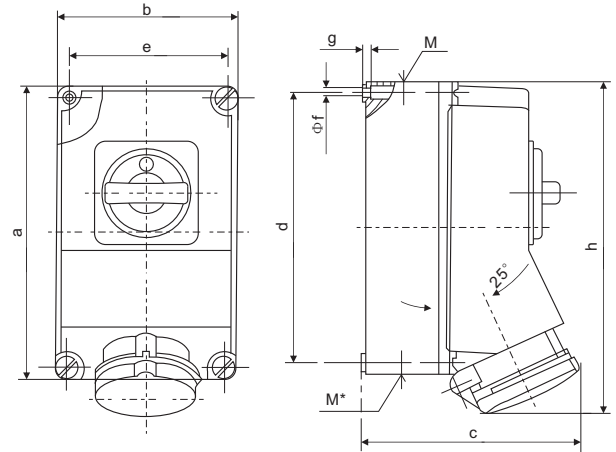




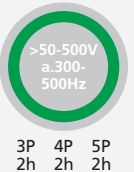
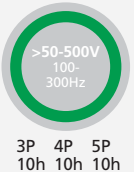
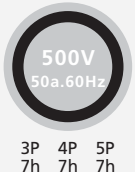
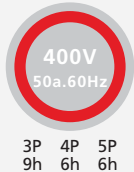
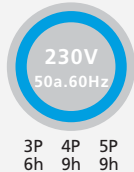
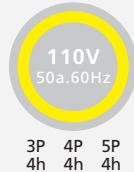
# 赛普 CEE/IEC 国际标准 机械联锁

## INTERNATIONAL STANDARD MECHANICAL INTERLOCK

符合欧洲/国际标准 EN/IEC 60309-2  
Conform to European / international standards EN/IEC 60309-2



电流 极数  
Current Poles



### IP44 CEE/IEC 机械联锁 Mechanical Interlock

型号 MODEL	极数 Poles	16		32		32		63		63	
		3	4	3	4	3	4	3	4	3	4
	16	3	4	SP7010	SP5099	SP7002	SP5100	SP5101			
		4	5	SP5457	SP5102	SP5103					
		5									
	32	3	4	SP5743	SP5104	SP5696	SP5105	SP5106			
		4	5	SP5460	SP5107	SP5108					
		5									
63	3	4	SP6569	SP5955	SP6571	SP5956	SP5957				
	4	5			SP5959						

### 参数 Parameter

尺寸:毫米 Size:mm

安培 Amp	16			安培 Amp	16			安培 Amp	32			安培 Amp	32			安培 Amp	63			安培 Amp	63		
极数 Poles	3	4	5	极数 Poles	3	4	5	极数 Poles	3	4	5	极数 Poles	3	4	5	极数 Poles	3	4	5	极数 Poles	3	4	5
a	225	225	225	M	2×25	2×25	2×25	a	225	225	225	M	2×25	2×25	2×25	a	264	264	264	M	40	40	40
b	118	118	118	M*	25/32	25/32	25/32	b	118	118	118	M*	25/32	25/32	25/32	b	163	163	163	M*	2×40	2×40	2×40
c	141	141	141	导线横截面积(平方毫米) 从最小至最大 Conductor crosssectional area (mm²)Min. To Max			c	146	146	146	导线横截面积(平方毫米) 从最小至最大 Conductor crosssectional area (mm²)Min. To Max			c	192	192	192	导线横截面积(平方毫米) 从最小至最大 Conductor crosssectional area (mm²)Min. To Max					
d	208	208	208				d	208	208	208				d	240	240	240						
e	101	101	101	1.5-2.5			e	101	101	101	4-6			e	140	140	140	10-16					
f	6.3	6.3	6.3				f	6.3	6.3	6.3				f	8.1	8.1	8.1						
g	8	8	8				g	8	8	8				g	8	8	8						
h	250	252	254				h	264	264	264				h	300	300	300						