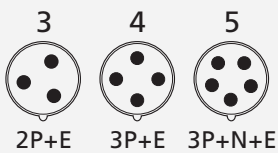
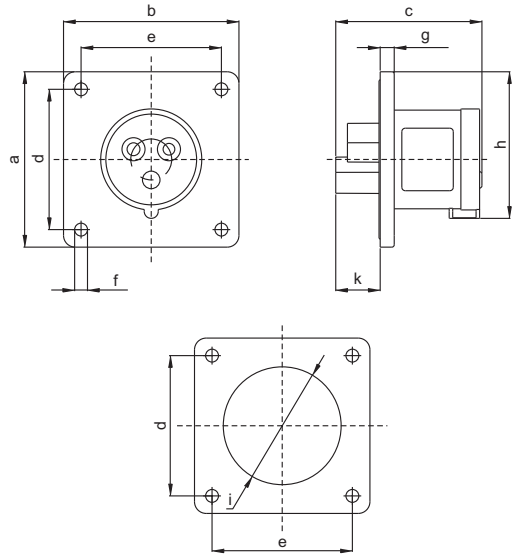
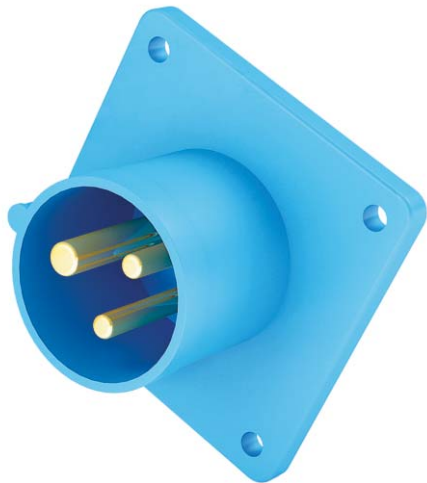




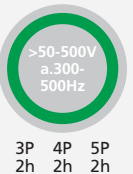
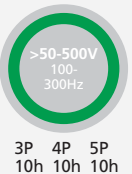
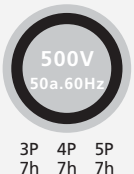
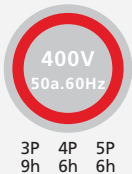
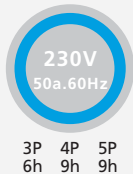
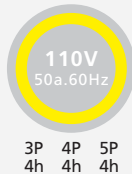
赛普 CEE/IEC 国际标准 暗装插头

CEE/IEC INTERNATIONAL STANDARD PANEL MOUNTED PLUG

符合欧洲/国际标准 EN/IEC 60309-2
Conform to European / international standards EN/IEC 60309-2



电流 极数
Current Poles



IP44 CEE/IEC 暗装插座 Panel Mounted Plug 16A-32A

型号 MODEL	16	3	4	5	AP-810	AP-812	AP-9813	AP-814
		极数 Poles	3	4	5	AP-9811	AP-837	
	32	3	4	5	AP-816	AP-817	AP-9815	AP-820
		4	5	AP-9816	AP-838	AP-819		
		5	AP-9817	AP-9839	AP-821			

参数Parameter

尺寸:毫米 Size:mm

安培 Amp	16			安培 Amp	16			安培 Amp	32			安培 Amp	32						
极数 Poles	3	4	5	极数 Poles	3	4	5	极数 Poles	3	4	5	极数 Poles	3	4	5				
a	75	75	75	k	18.5	18.5	18.5	a	75	75	75	k	18.5	18.5	18.5				
b	75	75	75	i	48.8	50.8	52.8	b	75	75	75	M	52	52	56.4				
c	62	62	62	导线横截面积(平方毫米)从最小至最大 Conductor crosssectional area (mm ²)Min. To Max						c	62	62	62	导线横截面积(平方毫米)从最小至最大 Conductor crosssectional area (mm ²)Min. To Max					
d	60	60	60	1.5-2.5						d	60	60	60	4-6					
e	60	60	60							e	60	60	60						
f	5.5	5.5	5.5							f	5.5	5.5	5.5						
g	6	6	6							g	6	6	6						
h	62.7	66.2	70.2							h	71.9	71.9	75.5						