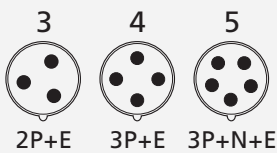
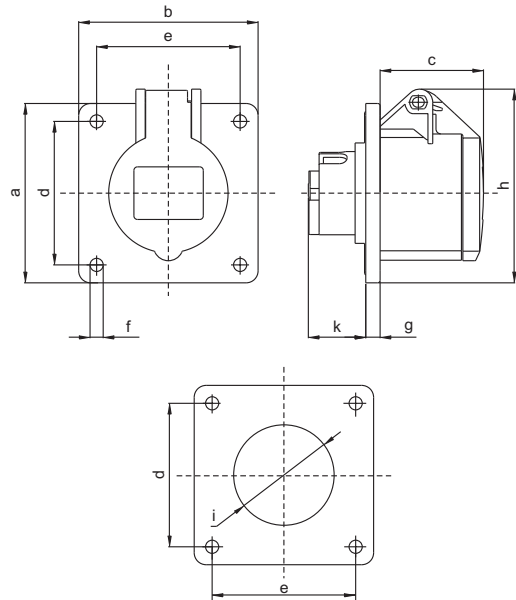




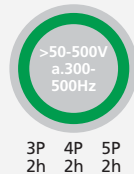
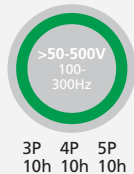
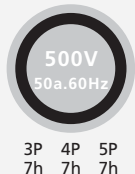
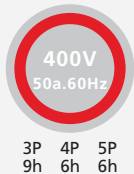
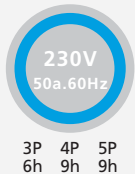
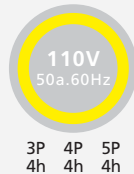
赛普 CEE/IEC 国际标准 暗装插座

CEE/IEC INTERNATIONAL STANDARD PANEL MOUNTED SOCKET

符合欧洲/国际标准 EN/IEC 60309-2
Conform to European / international standards EN/IEC 60309-2



电流 极数
Current Poles



3P 4P 5P
4h 4h 4h

3P 4P 5P
6h 9h 9h

3P 4P 5P
9h 6h 6h

3P 4P 5P
7h 7h 7h

3P 4P 5P
10h 10h 10h

3P 4P 5P
2h 2h 2h

IP44 CEE/IEC 暗装插座 Panel Mounted Socket 16A-32A

型号 MODEL	16	3	AP-1365	AP-1366	AP-1367	AP-1391	AP-3054	AP-3055			
									4	AP-1388	AP-1389
		5	AP-1384	AP-1386	AP-1385	AP-3057	AP-3059	AP-3060			
	32	3	AP-1394	AP-1395	AP-1396	AP-1400	AP-1041	AP-1042			
		4	AP-1397	AP-1398	AP-1399				AP-3425	AP-3455	AP-3447
		5	AP-3449	AP-3454	AP-3451						

参数Parameter

尺寸:毫米 Size:mm

安培 Amp	16			安培 Amp	16			安培 Amp	32			安培 Amp	32		
极数 Poles	3	4	5	极数 Poles	3	4	5	极数 Poles	3	4	5	极数 Poles	3	4	5
a	75	75	75	k	23	23	23	a	75	75	75	k	25	25	25
b	75	75	75	i	42	48	55	b	75	75	75	i	56	56	61.5
c	43.2	45.2	51.2	导线横截面积(平方毫米)从最小至最大 Conductor crosssectional area (mm ²)Min. To Max			c	62.2	62.2	67	导线横截面积(平方毫米)从最小至最大 Conductor crosssectional area (mm ²)Min. To Max				
d	60	60	60	1.5-2.5			d	60	60	60	4-6				
e	60	60	60				e	60	60	60					
f	5.5	5.5	5.5				f	5.5	5.5	5.5					
g	6	6	6				g	6	6	6					
h	81	83	84				h	88.6	88.6	100.2					