

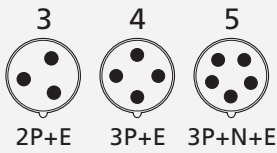
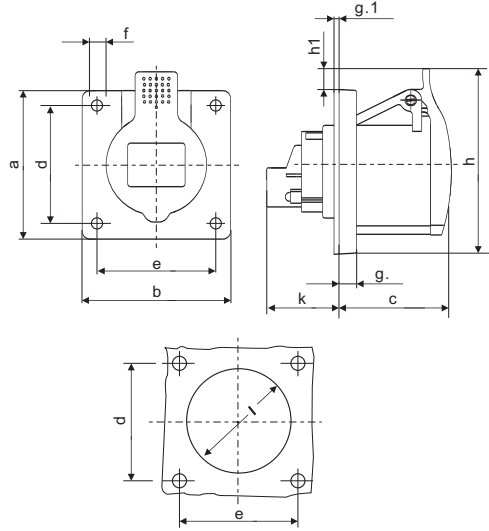


# 赛普 CEE/IEC 国际标准 暗装直插座

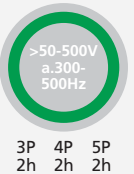
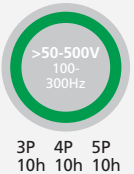
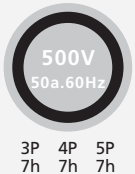
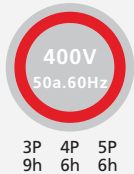
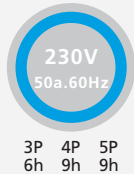
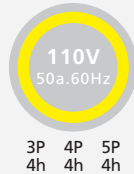
## CEE/IEC INTERNATIONAL STANDARD PANEL MOUNTED STRAIGHT SOCKET

符合欧洲/国际标准 EN/IEC 60309-2

Conform to European / international standards EN/IEC 60309-2



电流 极数  
Current Poles



### IP44 法兰尺寸 Flange Size 75×75 mm(16A,32A), 暗装插座 Panel Mounted Socket

| 型号<br>MODEL | 法兰尺寸<br>Flange Size | 16          |               | 32          |               | 63          |             |
|-------------|---------------------|-------------|---------------|-------------|---------------|-------------|-------------|
|             |                     | 极数<br>Poles | 型号<br>MODEL   | 极数<br>Poles | 型号<br>MODEL   | 极数<br>Poles | 型号<br>MODEL |
|             | 75×75 mm            | 3           | SP1628/SP1365 | 3           | SP1629/SP1366 | 3           | SP1367      |
|             |                     | 4           | SP1388        | 4           | SP1389        | 4           | SP1391      |
|             |                     | 5           | SP1384        | 5           | SP1386        | 5           | SP1392      |
|             |                     | 3           | SP1394        | 3           | SP1395        | 3           | SP1396      |
|             |                     | 4           | SP1397        | 4           | SP1398        | 4           | SP1399      |
|             |                     | 5           | SP3449        | 5           | SP3454        | 5           | SP3451      |
|             | 75×75 mm            | 3           | SP1260        | 3           | SP1261        | 3           | SP1262      |
|             |                     | 4           | SP1246        | 4           | SP1247        | 4           | SP1248      |
|             |                     | 5           | SP1250        | 5           | SP1251        | 5           | SP1252      |
|             |                     | 3           | SP3054        | 3           | SP3055        | 3           | SP3057      |
|             |                     | 4           | SP1392        | 4           | SP1393        | 4           | SP1400      |
|             |                     | 5           | SP3059        | 5           | SP3060        | 5           | SP3425      |
|             | 75×75 mm            | 3           | SP1041        | 3           | SP1042        | 3           | SP1042      |
|             |                     | 4           | SP1042        | 4           | SP1042        | 4           | SP1042      |
|             |                     | 5           | SP3447        | 5           | SP3447        | 5           | SP3447      |
|             |                     | 3           | SP1249        | 3           | SP1249        | 3           | SP1249      |
|             |                     | 4           | SP1249        | 4           | SP1249        | 4           | SP1249      |
|             |                     | 5           | SP1249        | 5           | SP1249        | 5           | SP1249      |

### 参数 Parameter

尺寸:毫米 Size:mm

| 安培<br>Amp   | 16 |     |     |     | 安培<br>Amp  | 16      |     |     |     | 安培<br>Amp   | 32  |     |  |             | 安培<br>Amp | 32 |     |             |     | 安培<br>Amp | 63   |             |     |       | 安培<br>Amp | 63 |  |  |  |
|-------------|----|-----|-----|-----|--|---------|-----|-----|-----|-------------|-----|-----|--|-------------|-----------|----|-----|-------------|-----|-----------|--|-------------|-----|-------|-----------|----|--|--|--|
| 极数<br>Poles | 3  | 3   | 4   | 5   | 极数<br>Poles  | 3       | 3   | 4   | 5   | 极数<br>Poles | 3   | 4   | 5  | 极数<br>Poles | 3         | 4  | 5   | 极数<br>Poles | 3   | 4         | 5  | 极数<br>Poles | 3   | 4     | 5         |    |  |  |  |
| a           | 55 | 75  | 75  | 75  | h  | 75      | 68  | 77  | 85  | a           | 75  | 75  | 75   | h           | 89        | 89 | 95  | a           | 107 | 107       | 107  | h           | 113 | 113   | 113       |    |  |  |  |
| b           | 55 | 75  | 75  | 75  | h1   | 19      | 1   | 5   | 9   | b           | 75  | 75  | 75   | h1          | 12        | 12 | 12  | b           | 100 | 100       | 100  | h1          | -   | -     | -         |    |  |  |  |
| c           | 51 | 54  | 54  | 54  | k  | 33      | 28  | 28  | 28  | c           | 64  | 64  | 64   | k           | 32        | 32 | 32  | c           | 80  | 80        | 80   | k           | 55  | 55    | 55        |    |  |  |  |
| d           | 45 | 60  | 60  | 60  | l  | 44      | 50  | 54  | 57  | d           | 60  | 60  | 60   | l           | 62        | 62 | 65  | d           | 85  | 85        | 85   | l           | 88  | 88    | 88        |    |  |  |  |
| e           | 45 | 60  | 60  | 60  | 导线横截面积(平方毫米)<br>从最小至最大<br>Conductor crosssectional<br>area (mm <sup>2</sup> )Min. To Max |         |     |     | e   | 60          | 60  | 60  | 导线横截面积(平方毫米)<br>从最小至最大<br>Conductor crosssectional<br>area (mm <sup>2</sup> )Min. To Max |             |           |    | e   | 77          | 77  | 77        | 导线横截面积(平方毫米)<br>从最小至最大<br>Conductor crosssectional<br>area (mm <sup>2</sup> )Min. To Max |             |     |       |           |    |  |  |  |
| f           | 55 | 5.5 | 5.5 | 5.5 | f  | 5.5     | 5.5 | 5.5 | f   | 5.5         | 5.5 | 5.5 | f  | 6           | 6         | 6  | f   | 6           | 6   | 6         | f  | 6           | 6   | 6     |           |    |  |  |  |
| g           | 8  | 8   | 8   | 8   | g  | 1.5-2.5 | g   | 8   | 8   | 8           | g   | 4-6 | g  | 12          | 12        | 12 | g   | 12          | 12  | 12        | g  | 10-16       | g   | 10-16 |           |    |  |  |  |
| g.1         | 2  | 2   | 2   | 2   | g.1  | 2       | 2   | 2   | g.1 | 2           | 2   | 2   | g.1  | 2           | 2         | 2  | g.1 | 2           | 2   | 2         | g.1  | 2           | 2   | 2     |           |    |  |  |  |