

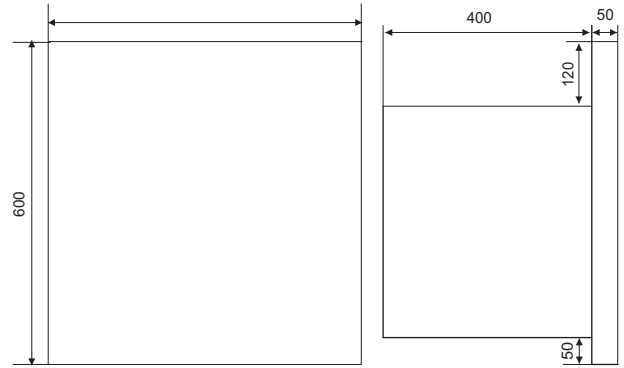


# 赛普 CEE/IEC 国际标准 展位箱(电井型)

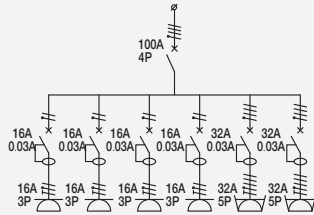
CEE/IEC INTERNATIONAL STANDARD EXHIBITION BOOTH DISTRIBUTION BOX(ELECTRICAL-WELL)

符合欧洲/国际标准 EN/IEC 60309-2

Conform to European / international standards EN/IEC 60309-2

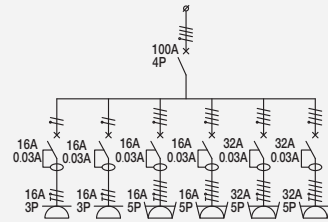


型号 Model: SP-Y1-1088



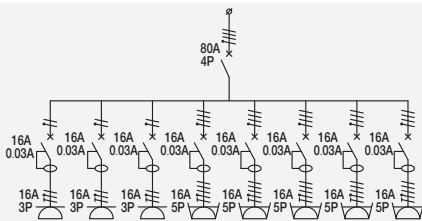
|  |  |
|--|--|
| △ IP44-IP66  | 32A/4P 漏电断路器 Residual Current Circuit Breaker 4PCS |
| 16A/3P CEE/IEC 插座 Socket   | 4PCS   |
| 32A/5P CEE/IEC 插座 Socket   | 2PCS   |
| 100A/4P 小型断路器 Miniature Circuit Breaker  | 1PC  |
| 16A/2P 漏电断路器 Residual Current Circuit Breaker  | 2PCS   |
| 弱电进线电缆接头1个M32, 强线进线电缆接头1个M48   |  |
| CableGland(inputofweakelectricity)1 × M32, CableGland(inputofstrongelectricity)1 × M48 |  |

型号 Model: SP-Y1-1089



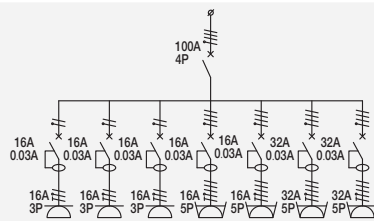
|  |  |
|--|--|
| △ IP44-IP66  | 16A/2P 漏电断路器 Residual Current Circuit Breaker 2PCS |
| 16A/3P CEE/IEC 插座 Socket   | 2PCS   |
| 16A/5P CEE/IEC 插座 Socket   | 2PCS   |
| 32A/4P 漏电断路器 Residual Current Circuit Breaker  | 2PCS   |
| 32A/5P CEE/IEC 插座 Socket   | 2PCS   |
| 100A/4P 小型断路器 Miniature Circuit Breaker  | 1PC  |
| 弱电进线电缆接头1个M32, 强线进线电缆接头1个M48   |  |
| CableGland(inputofweakelectricity)1 × M32, CableGland(inputofstrongelectricity)1 × M48 |  |

型号 Model: SP-Y1-1090



|  |  |
|--|--|
| △ IP44-IP66  | 16A/4P 漏电断路器 Residual Current Circuit Breaker 5PCS |
| 16A/3P CEE/IEC 插座 Socket   | 3PCS   |
| 16A/5P CEE/IEC 插座 Socket   | 5PCS   |
| 80A/4P 小型断路器 Miniature Circuit Breaker   | 1PC  |
| 16A/2P 漏电断路器 Residual Current Circuit Breaker  | 3PCS   |
| 弱电进线电缆接头1个M32, 强线进线电缆接头1个M48   |  |
| CableGland(inputofweakelectricity)1 × M32, CableGland(inputofstrongelectricity)1 × M48 |  |

型号 Model: SP-Y1-1091



|  |  |
|--|--|
| △ IP44-IP65  | 16A/2P 漏电断路器 Residual Current Circuit Breaker 3PCS |
| 16A/3P CEE/IEC 插座 Socket   | 3PCS   |
| 16A/5P CEE/IEC 插座 Socket   | 2PCS   |
| 32A/4P 漏电断路器 Residual Current Circuit Breaker  | 2PCS   |
| 32A/5P CEE/IEC 插座 Socket   | 2PCS   |
| 100A/4P 小型断路器 Miniature Circuit Breaker  | 1PC  |
| 弱电进线电缆接头1个M32, 强线进线电缆接头1个M48   |  |
| CableGland(inputofweakelectricity)1 × M32, CableGland(inputofstrongelectricity)1 × M48 |  |